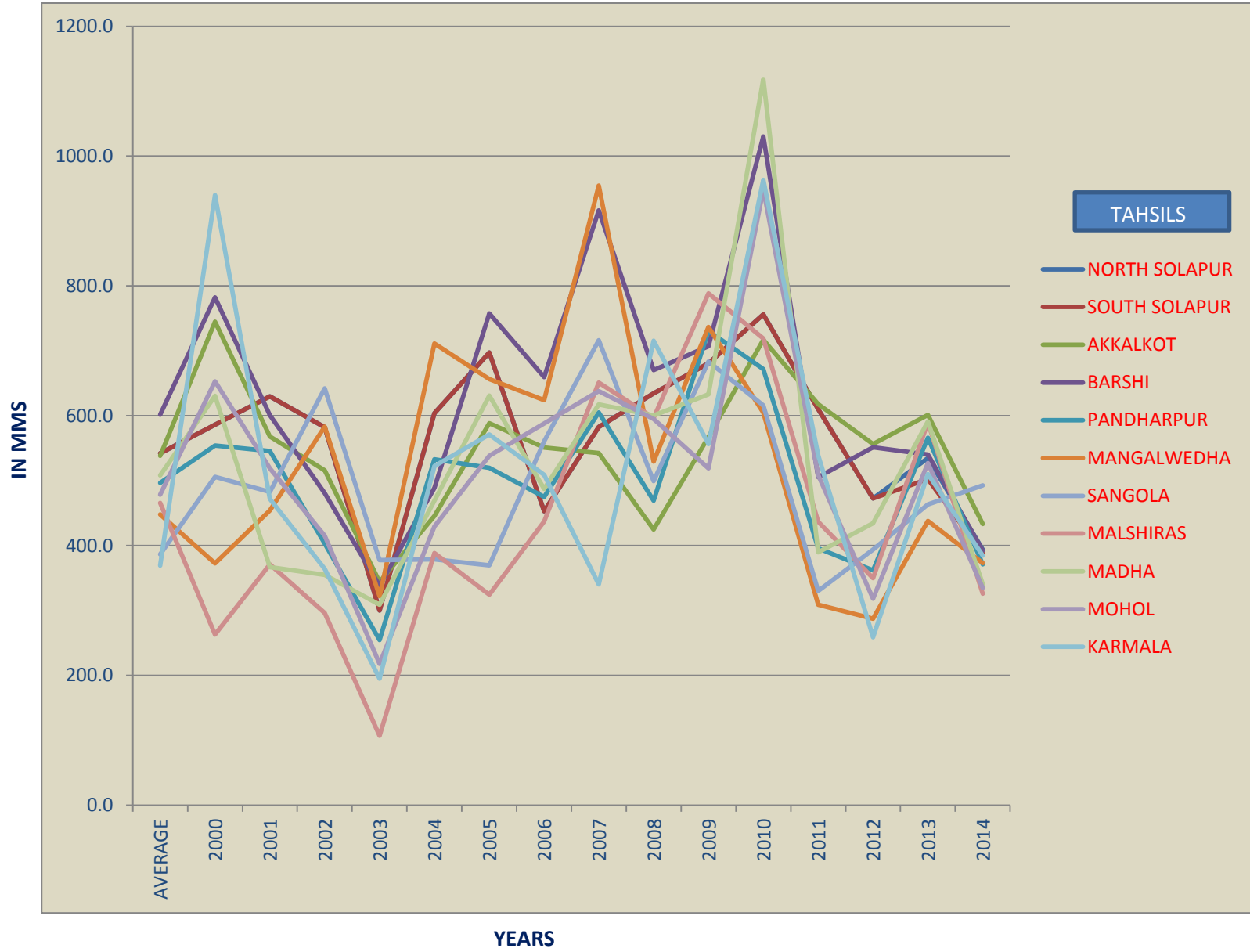


RAINFALL OF SOLAPUR DISTRICT
TAHSILWISE AVERAGE AND ACTUAL RAINFALL IN LAST FIFTEEN YEARS

SR. NO.	TAHSILS	AVERAGE	2000	2001	2002	2003	2004	2005	2006	2007	2008	2009	2010	2011	2012	2013	2014
1	NORTH SOLAPUR	542.2	586.3	629.8	582.3	300.2	603.8	697.6	453.1	582.9	634.3	680.9	756.2	610.2	472.8	534.7	393.9
2	SOUTH SOLAPUR	542.2	586.3	629.8	582.3	300.2	603.8	697.6	453.1	582.9	634.3	680.9	756.2	610.2	472.8	502.4	387.6
3	AKKALKOT	538.5	745.0	568.0	516.0	344.0	445.7	588.6	551.1	542.4	424.8	567.2	717.2	618.0	556.3	601.4	433.3
4	BARSHI	601.8	782.4	601.0	480.7	338.4	488.9	757.5	659.6	916.3	670.3	706.9	1030.3	505.6	551.6	540.1	392.2
5	PANDHARPUR	496.5	554.2	545.8	403.3	254.6	532.8	519.7	474.8	605.3	469.2	730.8	672.1	395.8	361.8	566.2	371.3
6	MANGALWEDHA	447.9	372.6	454.1	583.0	322.2	711.4	656.4	623.9	954.7	529.5	736.9	604.9	309.0	287.5	437.9	373.0
7	SANGOLA	386.6	505.9	482.8	642.0	377.8	379.0	369.6	560.6	716.5	499.3	683.6	615.9	330.1	393.8	463.5	492.9
8	MALSHIRAS	465.6	263.0	371.0	296.0	107.0	388.5	324.3	437.2	651.1	596.5	788.7	719.2	436.8	350.0	589.5	326.0
9	MADHA	508.3	630.7	367.0	355.0	308.9	469.0	631.0	487.3	617.4	600.3	632.8	1118.7	389.5	434.5	591.3	340.4
10	MOHOL	478.5	652.9	519.0	415.1	217.6	429.5	538.2	588.1	638.0	595.0	519.1	948.8	508.6	318.1	527.0	335.0
11	KARMALA	369.0	940.0	472.0	364.0	194.9	522.4	571.3	508.8	340.2	715.7	556.3	963.4	538.9	258.7	510.0	384.6
TOTAL		5377.1	6619.3	5640.3	5219.7	3065.8	5574.8	6351.8	5797.6	7147.7	6369.2	7284.1	8902.9	5252.7	4457.8	5863.8	4230.1
AVERAGE		488.8	601.8	512.8	474.5	278.7	506.8	577.4	527.1	649.8	579.0	662.2	809.4	477.5	405.3	533.1	384.6

YEARWISE RAINFALL OF SOLAPUR DISTRICT IN LAST FIFTEEN YEARS



YEARWISE RAINFALL OF SOLAPUR DISTRICT IN LAST FIFTEEN YEARS

